



2010 Cuvée Chloé : ** Coup de Coeur wonderful wine. Elegant, powerful... fine and equilibrated oak taste... a wine of character... to be kept down.”

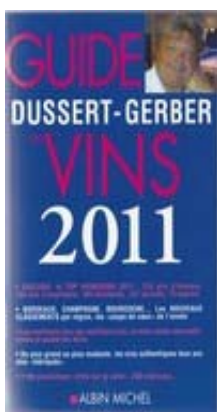
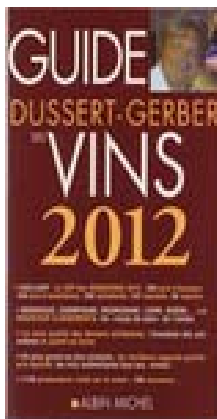
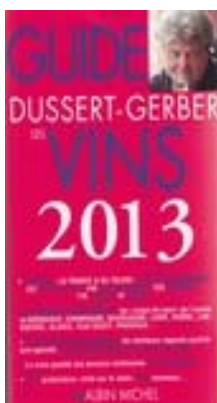
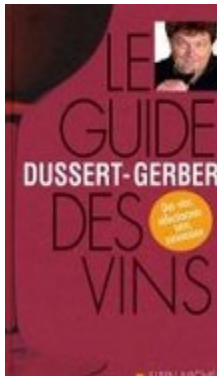
2008 Cuvée Chloé : **...deep crimson tint, with a generous nose of red and black ripen berries lightly oaked in spite of the 18th months aged in oak barrels. Since the attack, a superbe sensation of chillness fills an huge, mild and round palate providing balance and length. A georgious wine....

2009 White wine : *... a seducing wine due to the richness of its aromas of acacia flowers and the chillness of its fruitness (white peach, passion fruit) with hint of green almond but also due to its structure in mouth, its concentrated and soft substance...



2005 Cuvée Henri : *** Merlot (75 %) and Cabernet make up this deeply expressive wine : a complex bouquet in which fruit yields to elegant oak accented with coco, coconut and spice. The palate marries fatness, volume and silky tannins and leaves a seductive impression of concentration with a long finish.

GUIDE DUSSERT-GERBER



FROM 2009 TO 2014 , THE GUIDE DUSSERT- GERBER HAS PLACED THE CHATEAU BERTHENON AT THE FIRST POSITION AMONG THE PRODUCERS OF BLAYE COTES DE BORDEAUX, “ AT THE TOP PLACE”

2012 Blanc Sauvign : « a nice pale yellow color , very aromatic wine with smell of boxwood and Broom, very fruity ; a great floral freshness, long lasting in the mouth. Great.”

2011 Red tradition : “ a supple and fat wine, with a silky but full- bodied mouth ; do not hesitate”

2010 Cuvée Chloé : « a deep crimson color, with ripe and fat tannins, dominated by leather, raspberry and blackcurrant, fleshy as we like.... »

2010 Cuvée Henri : « deep red color, full-bodied with a lot of tipicity, gorgeous, with supple tannins and a noze dominated by cinnamon...”

2009 Tradition : « very elegant and structurated, with rich and velvety tannins ; a real aroma harmony. A wine wich gathers refinement and richness, with very good aging capacity.”

2010 Tradition : « an elegant and smooth attack, fleshy, powerfull and long lasting aromas based on red fruits ; a soft and harmonious wine »

2010 Cuvée Léa : « ...aged in new French oak barrels, both elegant , full-bodied, fat and delicate ; aromas of acacia flowers...”

2009 Tradition : « structurated, very elegant, with rich and smooth tannins ...with delicate aromas ; a wine which associates both elegance and richness ; a wine which good aging capacity »

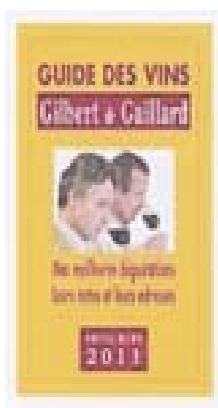
2008 Tradition : « deep red colour, powerfull with fine noze bazed on smoke and plum ; with strong but smooth and fine tannins ; well balanced, perfumed ; a wine which can age.

2007 Cuvée Henri : « Excellent wine, round, smooth, long lasting with deep aromas of red fruits. A fat, harmonious and very seducing wine »

2006 Tradition : « With a noze of small red fruits (redcurrant) this vintage is full body wine, whith a rich and long lasting mouth. It starts to open itself. Nice wine.



**GUIDE DES VINS
GILBERT &
GAILLARD 2014 -
2010**



2010 Cuvée Chloé : "Among the best wines....elegant fruit flavours, powerfull and round at the same time. Long lasting on the palate. A real velvet juice !"

2009 Cuvée Chloé : “ Among the great successful wines. Very good result as far as aromas and taste. This wine is meaty, racy and long on the palate. A vintage with a lot of personality”

2006 Cuvée Chloé : “ A very strong powerful nose, full and structured on the palate, very elegant tannins and a well made finish”.

2013 White sauvignon : 86/100

« ... fine noze of white fruits (apple, pear) with hints of citrus (lemon and grapefruit) mixed with flavor of broom and white small flowers. Nice attack with a blooming of aromas(both slightly acid and floral)....."

2012 Tradition : 84/100

" ..strong noze of very ripe red fruits with hints of mashed wild strawberry and over ripe raspberry....The attack is round, generous and well perfumed. You feel red and black fruits flacvors.... aperfect harmony in fatness and round, fat tannins..."

2012 Cuvée Henri : 89/100

"...flavors of both black and red fruits in perfect hrmony with fine toasted and oaky ones with hints of sweet spices (vanilia and cinnamon)...the attack is ample, round and very perfumed... long lasting in the mouth with hints of cacao, moka cake and roasting..."

2012 Cuvée Chloé : 89/100

"....noze of cacao, moka cake , coffee...domination of fruit aromas with hints of raspberry, blackcurrant and cherries.. A generous , smooth and seducing mouth due to the equilibrium of the freshness of its fruity aromas combined with fine oaky and vanillia ones. Very charming and delicate wine.

2008 Cuvée Henri : 86/100

Very nice young colour. Fine toasted and oaky noze, with hints of ripe forest fruits. Well-rounded and full-bodied mouth ; a perfect harmony in fatness, fine tannins and both fruity, oaky and long lasting aromas. Wine of Character.

2006 Tradition : 81/100

"Deep color. Fruity noze (ripe plum). A charming and smooth wine full a fresh fruits.To be drinken in a white meat or red one"

**MILLESIME
2009**



**This magazine has classified Château Berthenon
« premier grand vin du Blayais »..**

2006 Léa White : « Very well made white wine, aged in oak barrel with full of aromas and hints of almonds and citrus fruits on the palate »

2006 Tradition Excellent wine, with a deep red colour, a nose of small red fruits (currant), a rich and persistent mouth,, a well balanced and strong wine.

**MILLESIME
2010**



This magazine has classified Château Berthenon, for the 2nd time as « the first great wine of Blaye » in its classification.

2007 Tradition : « Excellent wine, with a rich, smooth and persistent mouth ; deep aromas of red fruits. Well balanced and elegant wine ».

2006 Tradition : « Has a nose of small red fruits (currant). This wine is well balanced with a rich and persistent mouth. It starts to open itself ».

**MILLESIME
2012**



CHATEAU BERTHENON IS STILL CLASSIFIED AT THE 1ST POSITION FOR 4 YEARS IN A ROW

2009 Cuvée Chloé : « ...a wine which gathers elegance, power...a very nice wine... »

2008 Tradition : « ...deep color, full body which a smoky and plum nose ; strong but elegant tannins, well balanced... »

2007 Cuvée Henri : «Excellent wine ; round and full in the mouth. Long lasting red fruit aromas. A well balanced wine »

**MAGAZINE
SOMMELIERS INTERNATIONAL
2014**



2012 Cuvée Henri : Visual aspect :dark and very dense ruby. Nose :
unveiling scents of little black fruits (blackcurrant,) mixed with toasted notes of wood (toast, vanilla) .
Palate : powerful and structured, with good balance, crispy tannins and fresh flavours. Finish suggesting a good ageing ability.
A great wine...."

2012 Cuvée Chloé : Visual aspect : a deep, radiant red colour. Nose :
liquorice with hints of zan. Palate : fulness, tannin well-incorporated in this lively wine. Superbe !



2010 Cuvée Chloé	: Silver medal
2009 Rouge tradition	: Silver medal
2009 Blanc Sauvignon	: Gold medal
2008 Cuvée Chloé	: Silver medal
2007 Tradition	: Silver medal



2010 Cuvée Chloé	: Silver medal
2009 Tradition	: Silver medal
2009 Cuvée Henri	: Silver medal
2008 Cuvée Chloé	: Silver medal (Best in class)
2008 Tradition	: Bronze medal



2012 Cuvée Henri	: Silver medal
2011 Cuvée Tradition	: Silver medal
2010 Cuvée Tradition	: Gold Medal
2010 Bordeaux Rouge	: Silver medal
2010 Blanc Sauvignon	: Bronze medal
2009 Cuvée Henri	: Bronze medal
2009 Tradition Rouge	: Bronze medal
2007 Cuvée Henri	: Bronze medal
2007 Cuvée Tradition	: Bronze medal

DECANTER



2006 Tradition	: Bronze trophée
2006 Cuvée Henri	: Bronze trophée
2007 Cuvée Henr	: Commended

VINALIES INTERNATIONAL 2010



2010 Cuvée Chloé	: Gold medal +Trophé of the best wine in its category
2010 Cuvée Henri	: Silver medal
2008 Rouge Tradition	: Silver medal
2008 Cuvée Henri	: Gold medal

CONCOURS D'AQUITAINE

2008 Cuvée Chloé	: Gold medal
2009 Cuvée Henri	: Silver medal

CHINESE VINALIES 2010

2009 Sauvignon blanc	: Silver medal
-----------------------------	----------------

WOMAN AND WINE INTERNATIONAL COMPETITION MONACO 2011



2010 Cuvée Henri	: Silver medal
2009 Cuvée Chloé	: Gold medal
2009 Cuvée Henri	: Silver medal

**CONCOURS DES
FEMINALIES 2013**



2013 White Sauvignon : Silver medal
2012 Cuvée Henri : Silver medal
2012 Bordeaux : Bronze medal
2011 Cuvée Chloé : Bronze medal
2011 Cuvée Henri : Gold medal

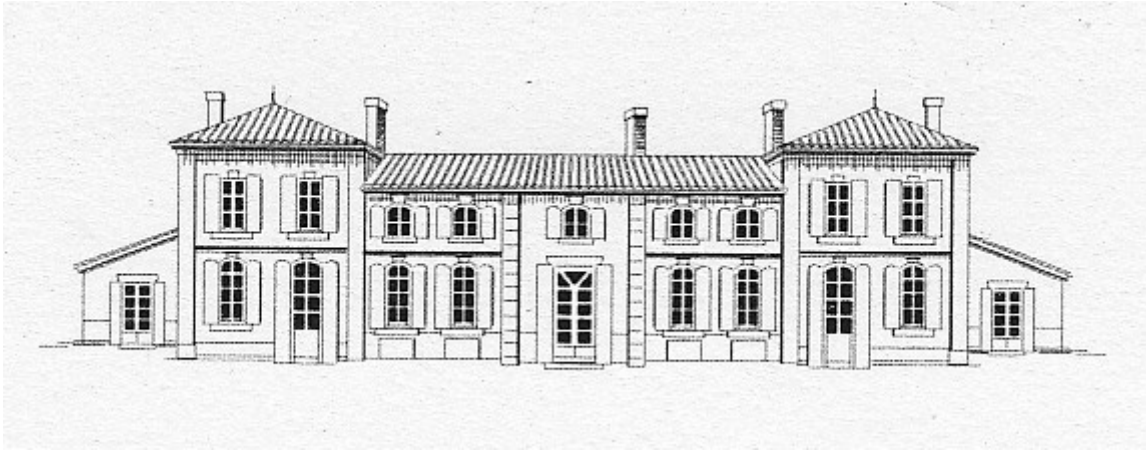
**CHALLENGE TO THE
BEST FRENCH WINES
& SPIRITS FOR ASIA
2014/ 2013/2012**

2012 Tradition : Bronze Medal
2012 Cuvée Henri : Silver Medal
2012 Cuvée Chloé : Gold Medal
2011 Cuvée Chloé : Gold Medal
2011 Cuvée Henri : Gold Medal
2011 Tradition : Bronze Medal
2011 Blanc sauvig : Bronze Medal
2010 Cuvée Chloé : Gold Medal
2010 Cuvée Henri : Silver Medal
2010 Tradition : Gold Medal

**3 RD CHALLENGE
TO THE BEST
FRENCH
WINES FOR THE
USA 2014/2013**



2013 White Sauvignon : Bronze medal
2012 Tradition : Silver Medal
2012 Cuvée Henri : Gold Medal
2012 Cuvée Chloé : Bronze Medal
2011 Tradition : Silver Medal
2011 Cuvée Henri : Gold Medal
2011 Cuvée Chloé : Silver Medal



REFERENCES AND MEDALS
FROM
CHATEAU BERTHENON

GFA Henri PONZ 3, le Barrail
33390 Saint Paul de Blaye
Tél / Fax : +33.05.57.42.52.24
e-mail : info@chateauberthenon.com
www.chateauberthenon.com